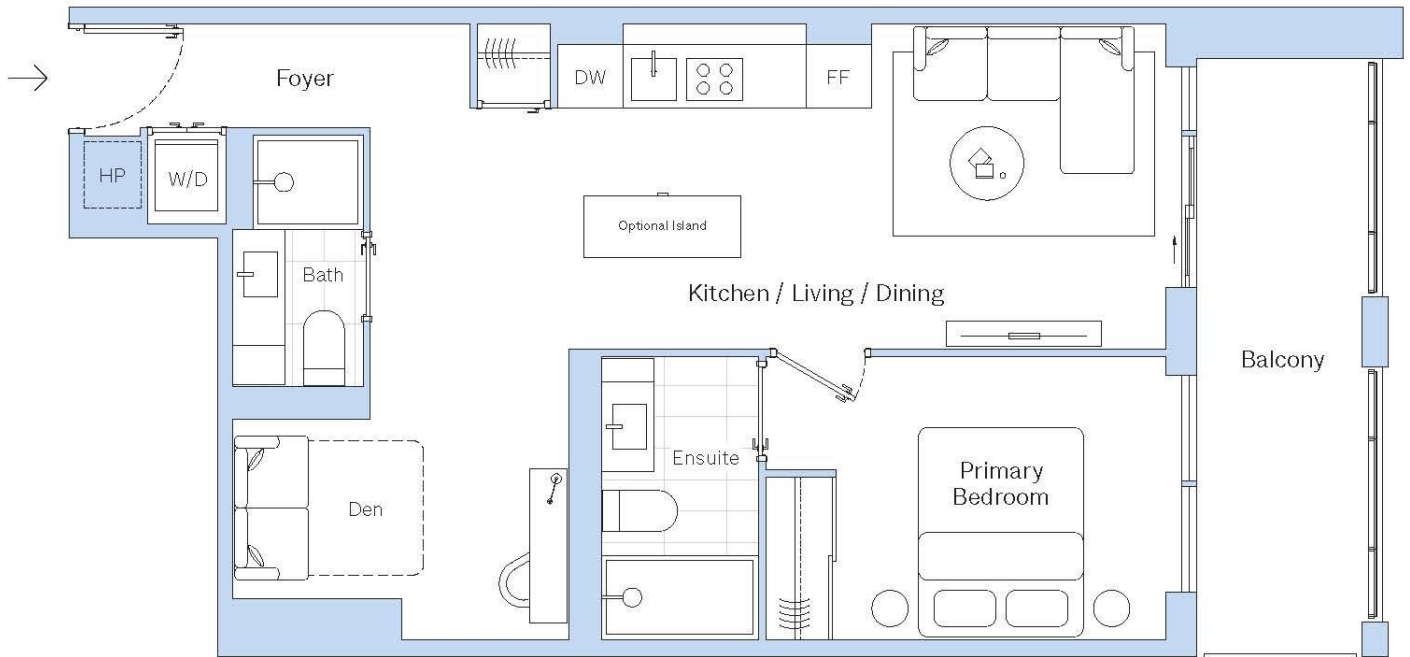




P-1D2-A

1 Bedroom, 1 Den, 2 Bathrooms, Balcony



TOTAL	FT ²	M ²	ORIENTATION	NORTH
Interior	692 ft ²	64 m ²		
Exterior	116 ft ²	11 m ²		
Total	808 ft ²	75 m ²		
DIMENSIONS	FT	M	FLOORS	
Kitchen / Living / Dining	19' 10" x 10' 4"	6.05 m x 3.15 m	3 - 6	
Primary Bedroom	13' 4" x 9' 0"	4.06 m x 2.74 m		
Den	10' 9" x 9' 3"	3.27 m x 2.81 m		

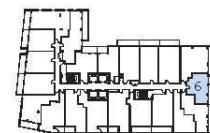
P-1D1-C

1 Bedroom, 1 Den, 1 Bathroom, Balcony



TOTAL	FT ²	M ²
Interior	545 ft ²	51 m ²
Exterior	112 ft ²	10 m ²
Total	657 ft ²	61 m ²

ORIENTATION NORTH



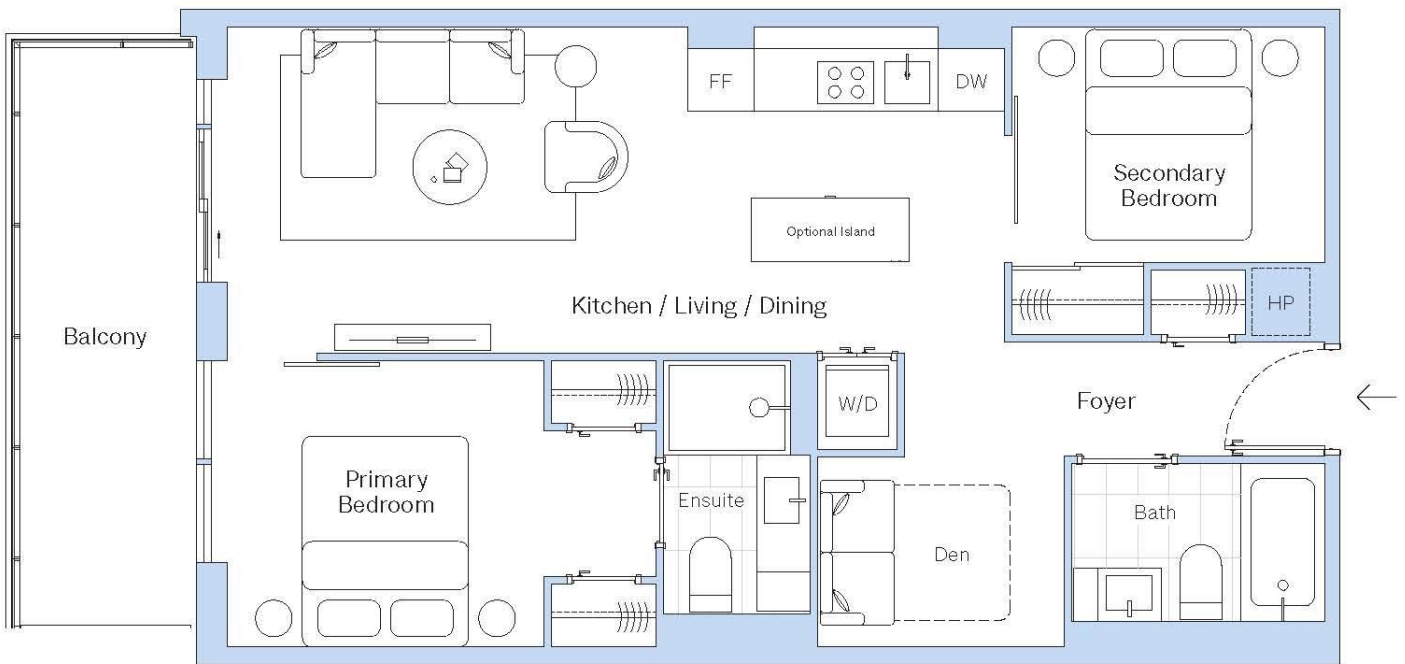
DIMENSIONS	FT	M
Kitchen / Living / Dining	17' 3" x 12' 8"	5.27 m x 3.86 m
Primary Bedroom	10' 10" x 9' 8"	3.29 m x 2.94 m
Den	4' 11" x 7' 10"	1.50 m x 2.39 m

FLOORS

3 - 6

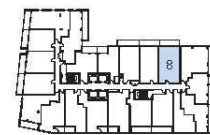
P-2D2-B

2 Bedrooms, 1 Den, 2 Bathrooms, Balcony



TOTAL	FT ²	M ²
Interior	762 ft ²	71 m ²
Exterior	115 ft ²	11 m ²
Total	877 ft ²	82 m ²

ORIENTATION NORTH



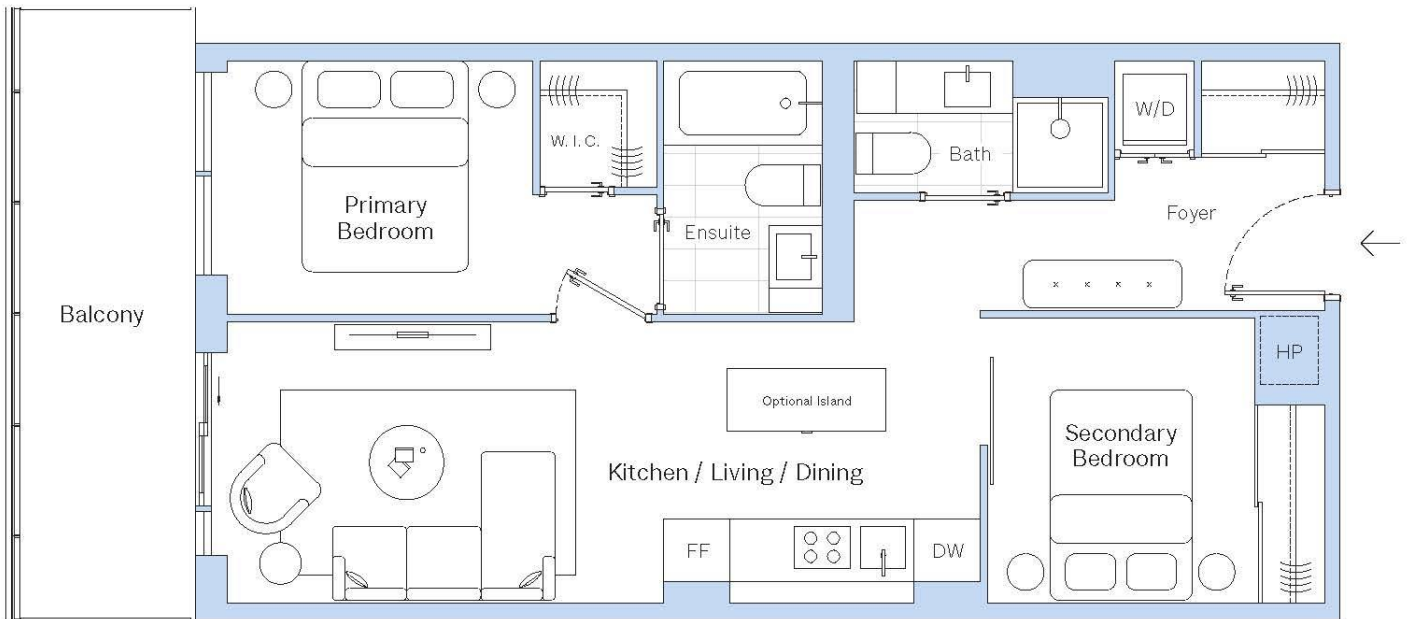
DIMENSIONS	FT	M
Kitchen / Living / Dining	25' 1" x 10' 4"	7.63 m x 3.14 m
Primary Bedroom	10' 6" x 9' 1"	3.20 m x 2.76 m
Secondary Bedroom	9' 11" x 7' 5"	3.02 m x 2.27 m
Den	7' 10" x 6' 0"	2.38 m x 1.83 m

FLOORS

3 - 6

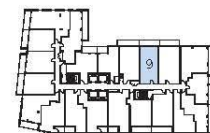
P-2N2-B

2 Bedrooms, 2 Bathrooms, Balcony



TOTAL	FT ²	M ²
Interior	672 ft ²	62 m ²
Exterior	119 ft ²	11 m ²
Total	791 ft ²	73 m ²

ORIENTATION NORTH



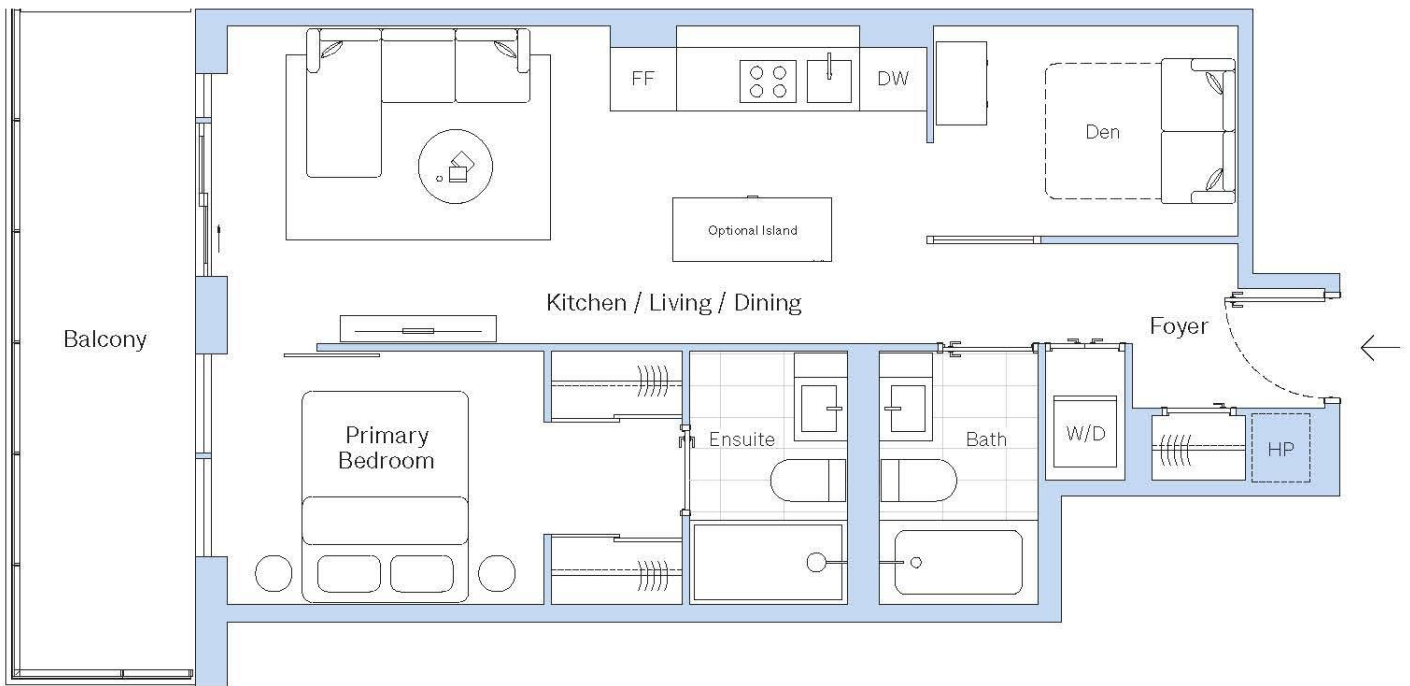
DIMENSIONS	FT	M
Kitchen / Living / Dining	24' 4" x 8' 11"	7.40 m x 2.71 m
Primary Bedroom	10' 2" x 8' 0"	3.09 m x 2.44 m
Secondary Bedroom	8' 5" x 9' 0"	2.57 m x 2.74 m

FLOORS

3 - 6

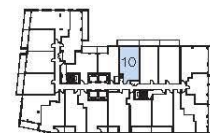
P-1D2-B

1 Bedroom, 1 Den, 2 Bathrooms, Balcony



TOTAL	FT ²	M ²
Interior	655 ft ²	61 m ²
Exterior	131 ft ²	12 m ²
Total	786 ft ²	73 m ²

ORIENTATION NORTH



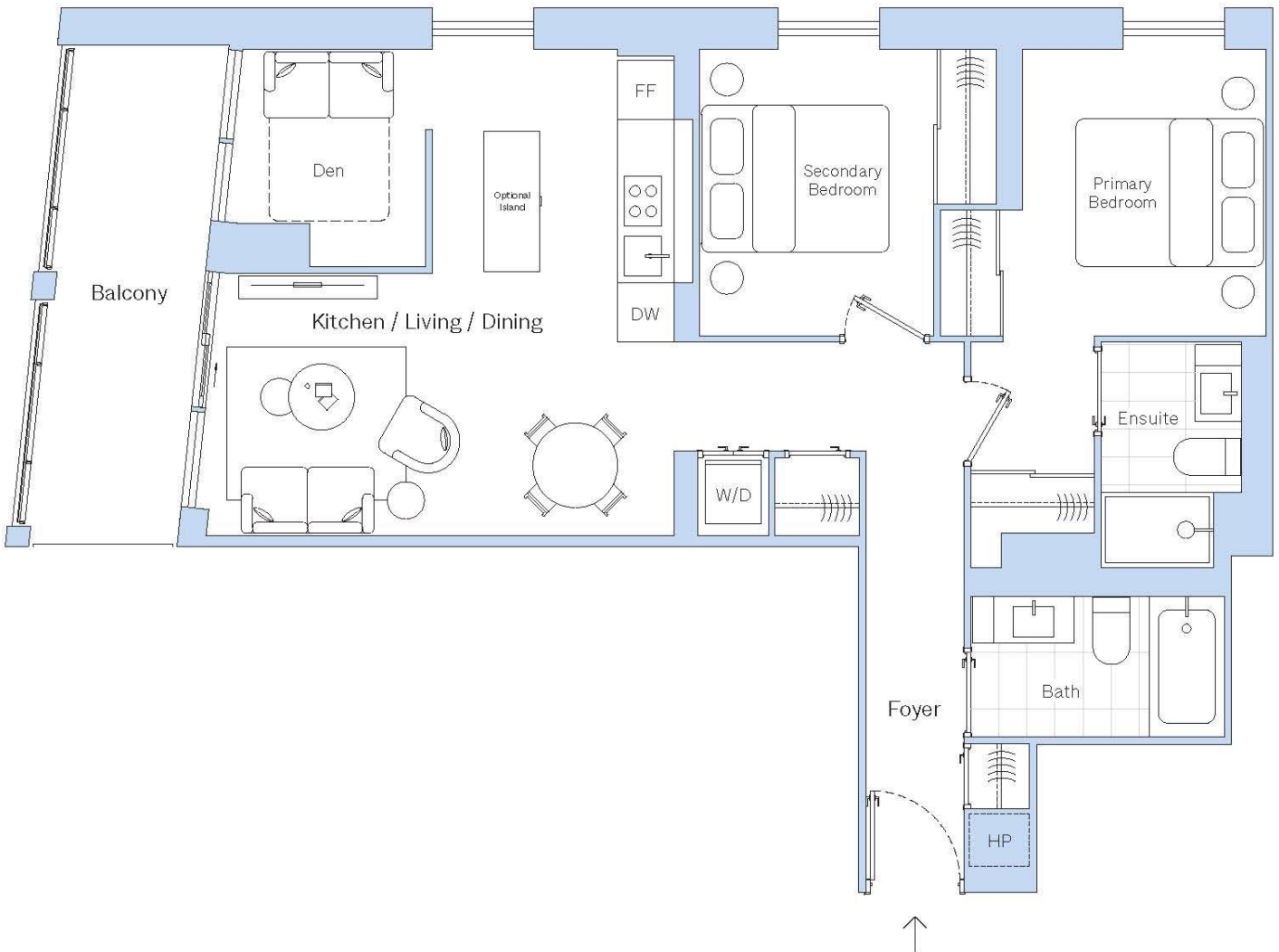
DIMENSIONS	FT	M
Kitchen / Living / Dining	22' 7" x 10' 0"	6.88 m x 3.06 m
Primary Bedroom	10' 6" x 8' 0"	3.20 m x 2.44 m
Den	9' 7" x 6' 8"	2.93 m x 2.02 m

FLOORS

3 - 6

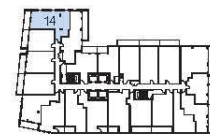
P-2D2-C

2 Bedrooms, 1 Den, 2 Bathrooms, Balcony



TOTAL	FT ²	M ²
Interior	852 ft ²	79 m ²
Exterior	103 ft ²	10 m ²
Total	955 ft ²	89 m ²

ORIENTATION NORTH



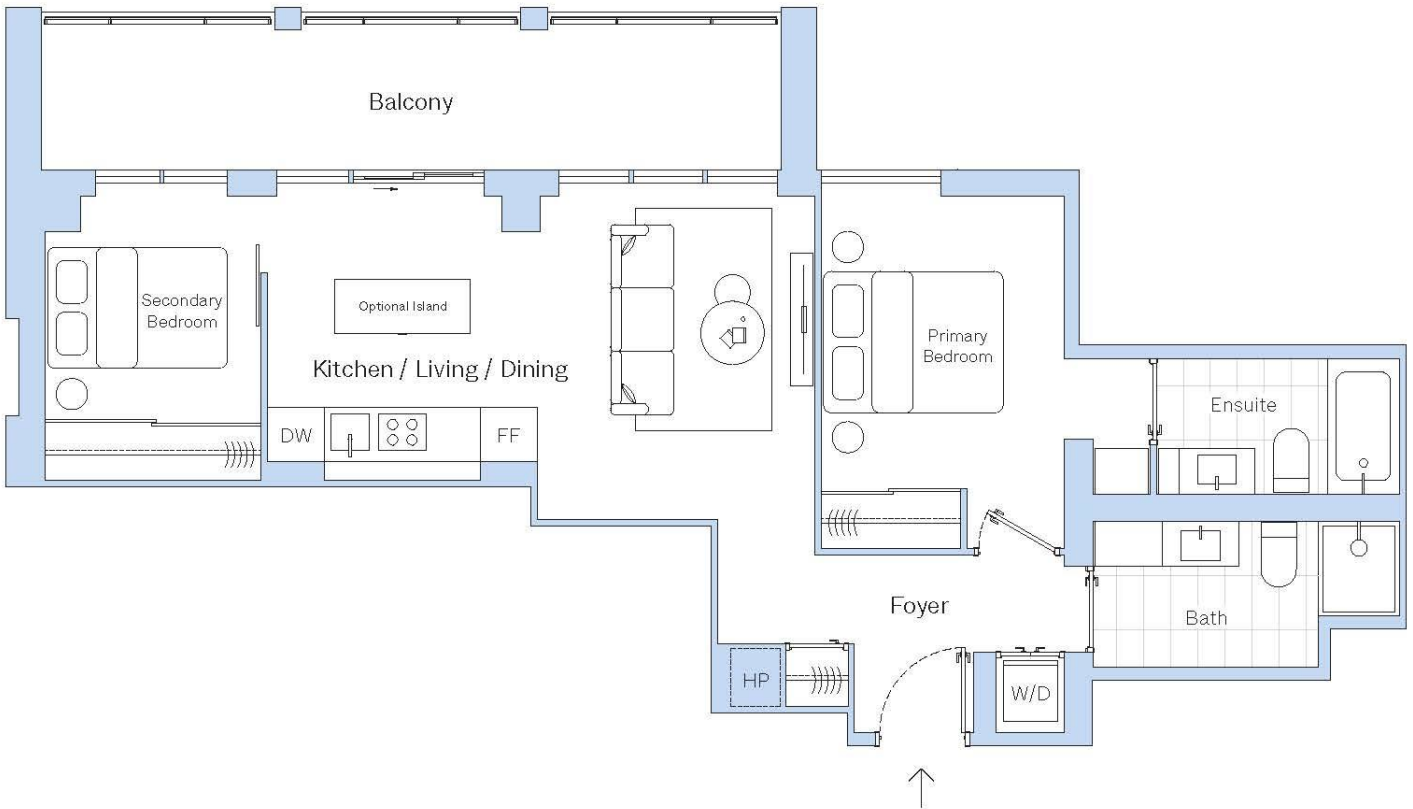
DIMENSIONS	FT	M
Kitchen / Living / Dining	16' 8" x 17' 3"	5.07 m x 5.26 m
Primary Bedroom	9' 4" x 10' 8"	2.84 m x 3.25 m
Secondary Bedroom	8' 4" x 10' 8"	2.54 m x 3.25 m
Den	6' 10" x 7' 9"	2.08 m x 2.35 m

FLOORS

3 - 6

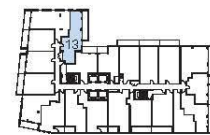
P-2N2-C

2 Bedrooms, 2 Bathrooms, Balcony



TOTAL	FT ²	M ²
Interior	761 ft ²	71 m ²
Exterior	155 ft ²	14 m ²
Total	916 ft ²	85 m ²

ORIENTATION NORTH



DIMENSIONS	FT	M
Kitchen / Living / Dining	20' 4" x 12' 6"	6.19 m x 3.80 m
Primary Bedroom	9' 0" x 11' 4"	2.74 m x 3.45 m
Secondary Bedroom	8' 0" x 8' 9"	2.44 m x 2.67 m

FLOORS

3 - 6

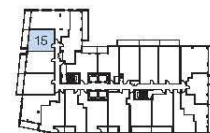
P-1D1-E

1 Bedroom, 1 Den, 1 Bathroom, Balcony



TOTAL	FT ²	M ²
Interior	536 ft ²	50 m ²
Exterior	100 ft ²	9 m ²
Total	636 ft ²	59 m ²

ORIENTATION NORTH



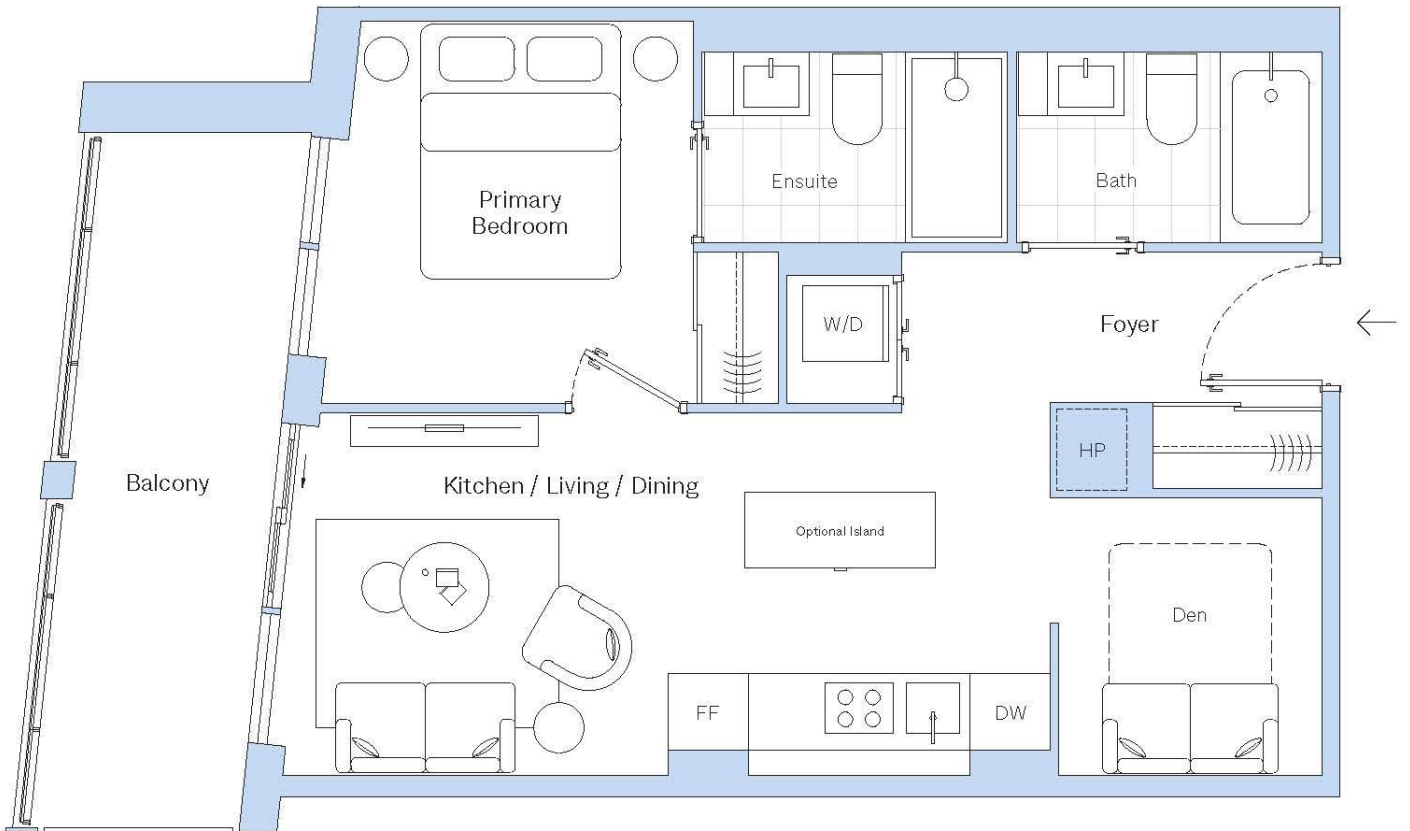
DIMENSIONS	FT	M
Kitchen / Living / Dining	18' 3" x 10' 8"	5.57 m x 3.25 m
Primary Bedroom	10' 9" x 9' 0"	3.27 m x 2.74 m
Den	5' 6" x 7' 3"	1.68 m x 2.22 m

FLOORS

3 - 6

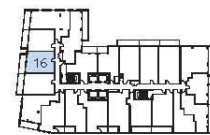
P-1D2-C

1 Bedroom, 1 Den, 2 Bathrooms, Balcony



TOTAL	FT ²	M ²
Interior	582 ft ²	54 m ²
Exterior	116 ft ²	11 m ²
Total	698 ft ²	65 m ²

ORIENTATION NORTH



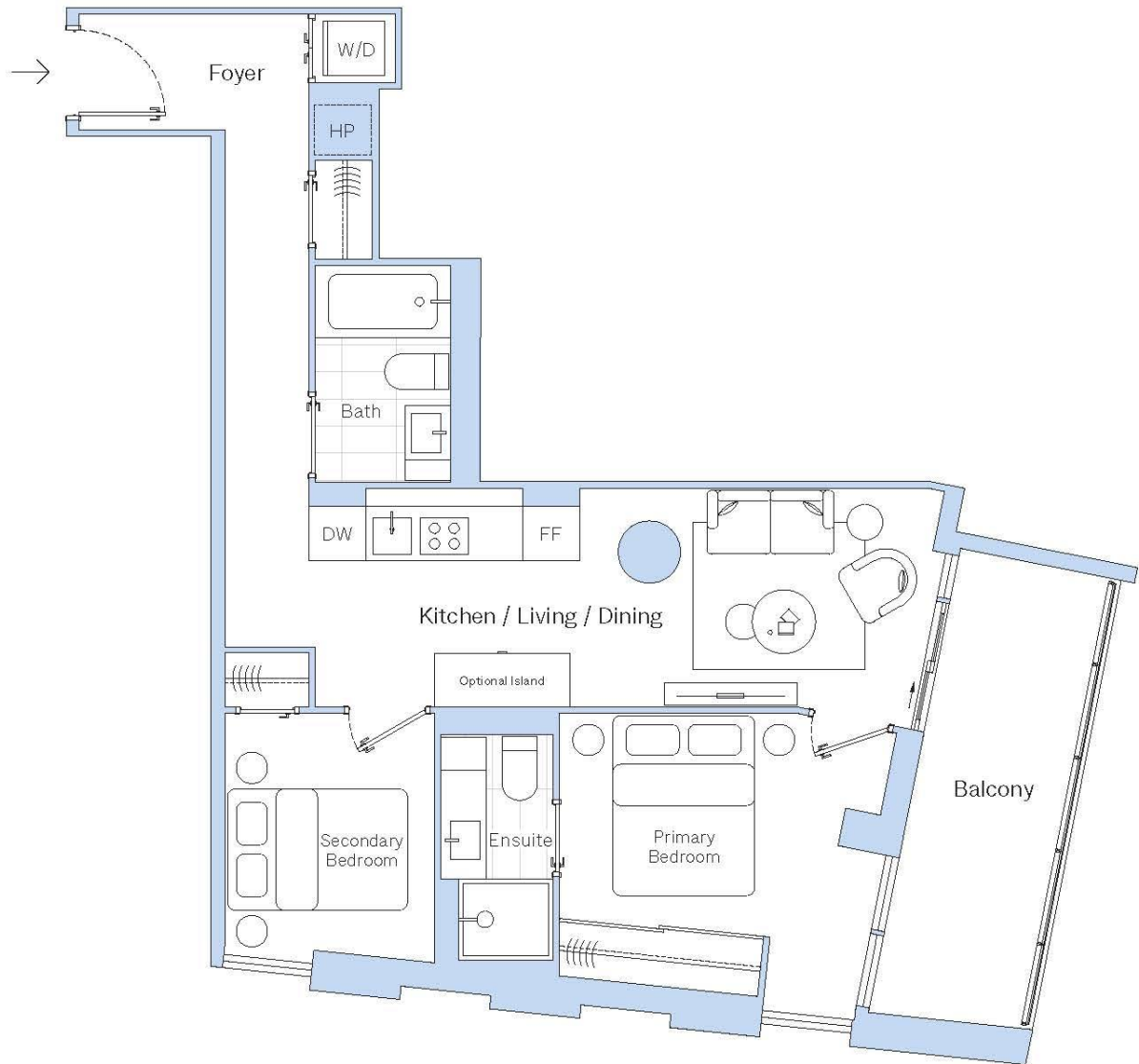
DIMENSIONS	FT	M
Kitchen / Living / Dining	20' 2" x 9' 6"	6.14 m x 2.90 m
Primary Bedroom	9' 10" x 10' 0"	2.98 m x 3.05 m
Den	6' 11" x 7' 3"	2.10 m x 2.22 m

FLOORS

3 - 6

P-2N2-E

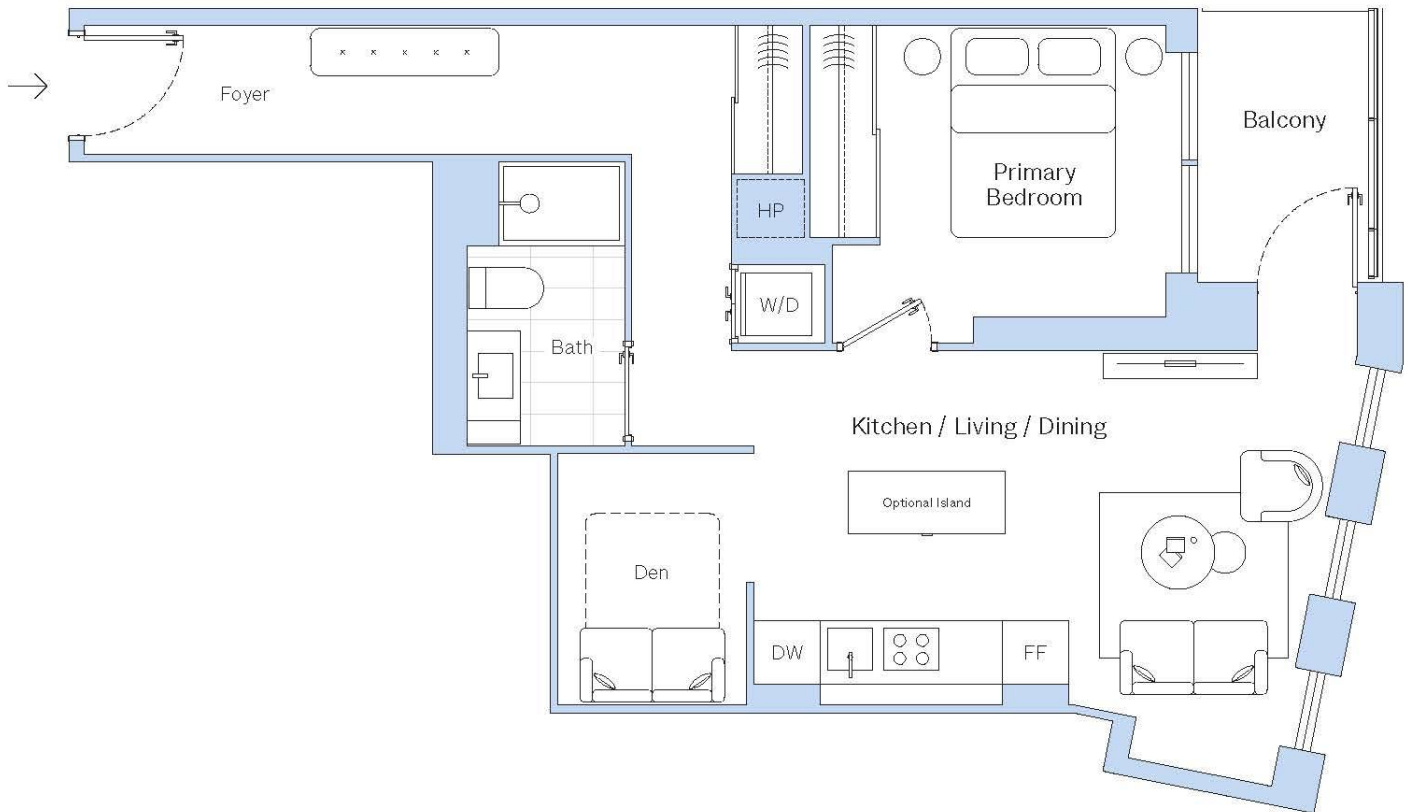
2 Bedrooms, 2 Bathrooms, Balcony



TOTAL	FT ²	M ²	ORIENTATION	NORTH
Interior	685 ft ²	64 m ²		
Exterior	101 ft ²	9 m ²		
Total	786 ft ²	73 m ²		
DIMENSIONS	FT	M	FLOORS	
Kitchen / Living / Dining	22' 8" x 8' 1"	6.89 m x 2.46 m	3 - 6	
Primary Bedroom	11' 11" x 11' 11"	3.63 m x 3.39 m		
Secondary Bedroom	7' 9" x 9' 2"	2.36 m x 2.80 m		

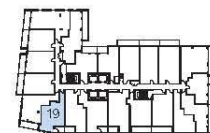
P-1D1-F

1 Bedroom, 1 Den, 1 Bathroom, Balcony



TOTAL	FT ²	M ²
Interior	672 ft ²	62 m ²
Exterior	50 ft ²	5 m ²
Total	722 ft ²	67 m ²

ORIENTATION NORTH



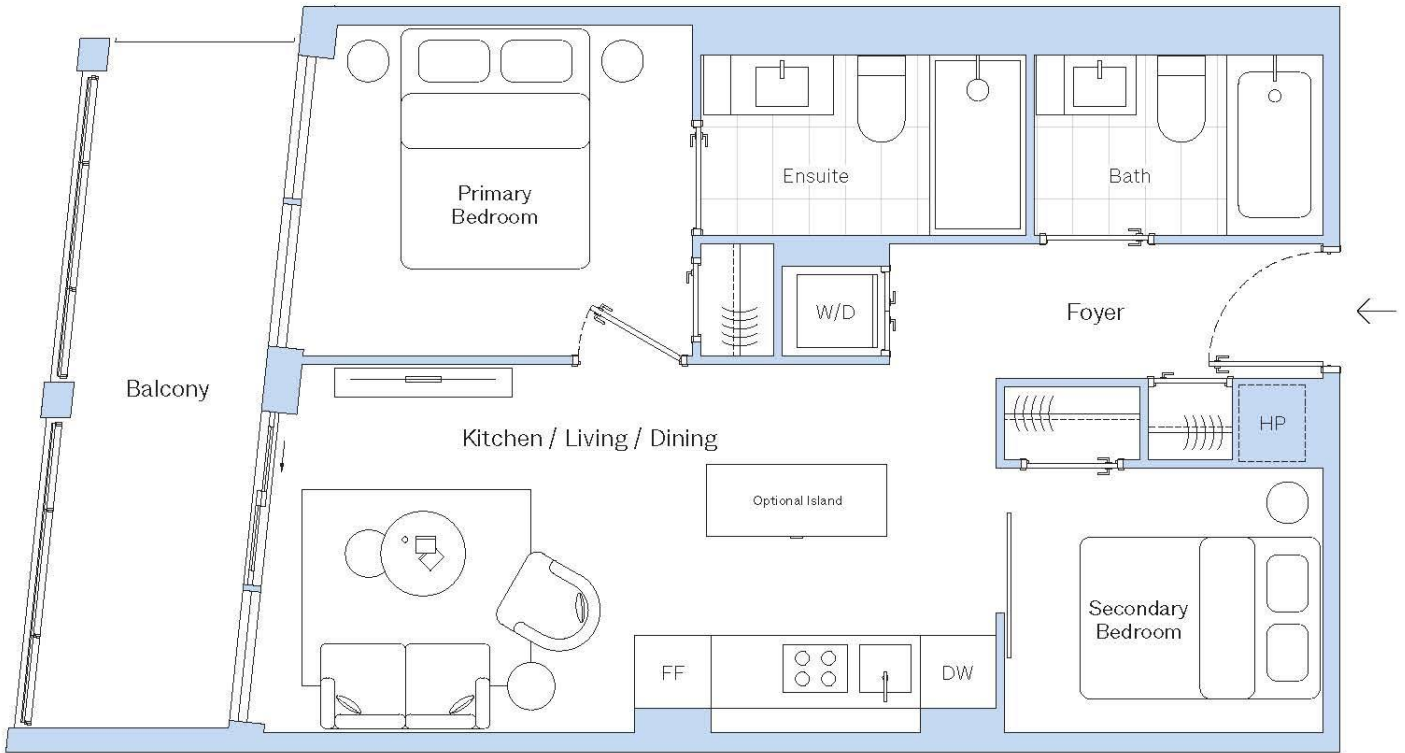
DIMENSIONS	FT	M
Kitchen / Living / Dining	18' 5" x 13' 5"	5.61 m x 4.08 m
Primary Bedroom	9' 7" x 9' 3"	2.93 m x 2.82 m
Den	6' 0" x 8' 0"	1.83 m x 2.44 m

FLOORS

3 - 6

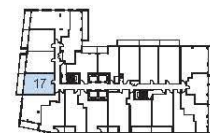
P-2N2-D

2 Bedrooms, 2 Bathrooms, Balcony



TOTAL	FT ²	M ²
Interior	627 ft ²	58 m ²
Exterior	121 ft ²	11 m ²
Total	748 ft ²	69 m ²

ORIENTATION NORTH



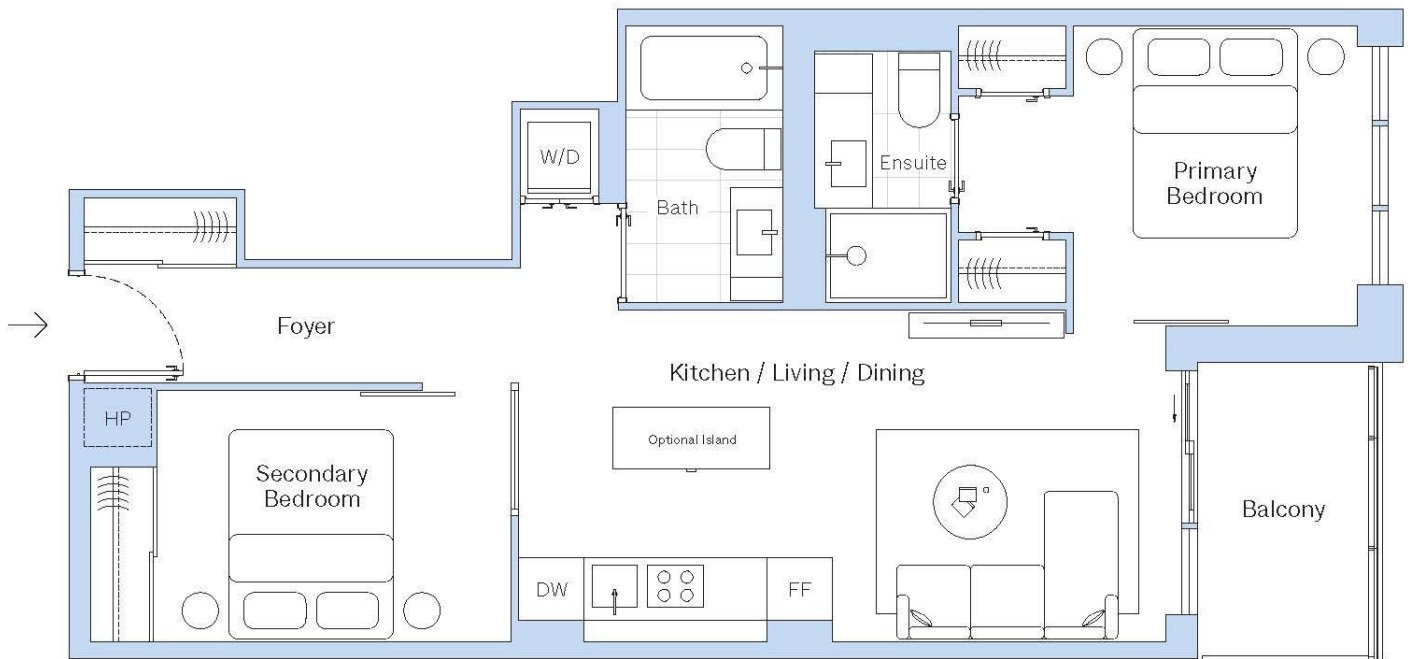
DIMENSIONS	FT	M
Kitchen / Living / Dining	20' 4" x 10' 2"	6.19 m x 3.10 m
Primary Bedroom	10' 10" x 9' 2"	3.31 m x 2.79 m
Secondary Bedroom	8' 10" x 7' 4"	2.69 m x 2.23 m

FLOORS

3 - 6

P-2N2-F

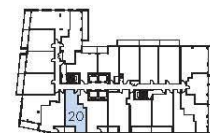
2 Bedrooms, 2 Bathrooms, Balcony



TOTAL	FT ²	M ²
Interior	709 ft ²	66 m ²
Exterior	58 ft ²	5 m ²
Total	767 ft ²	71 m ²

ORIENTATION

NORTH



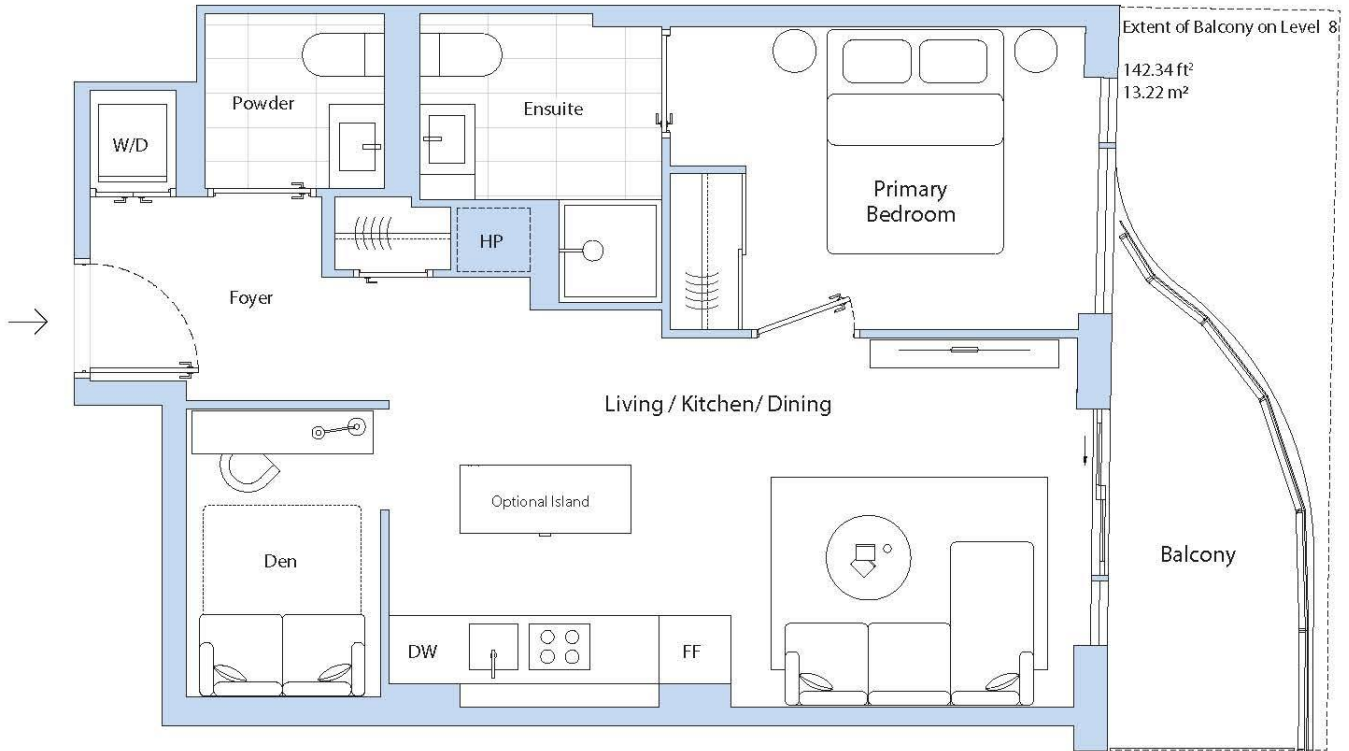
DIMENSIONS	FT	M
Kitchen / Living / Dining	21' 1" x 9' 11"	6.43 m x 3.01 m
Primary Bedroom	13' 2" x 9' 7"	4.01 m x 2.91 m
Secondary Bedroom	11' 3" x 8' 0"	3.44 m x 2.44 m

FLOORS

3 - 6

T-1D1-A

1 Bedroom, 1 Den, 1.5 Bathrooms, Balcony

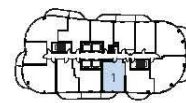


TOTAL	FT ²	M ²
Interior	623 ft ²	58 m ²
Exterior	76 ft ²	7 m ²
Total	699 ft ²	65 m ²

DIMENSIONS	FT	M
Living / Kitchen / Dining	20' 6" x 10' 11"	6.25 m x 3.33 m
Primary Bedroom	12' 7" x 8' 10"	3.84 m x 2.7 m
Den	5' 8" x 8' 5"	1.73 m x 2.57 m

ORIENTATION

NORTH



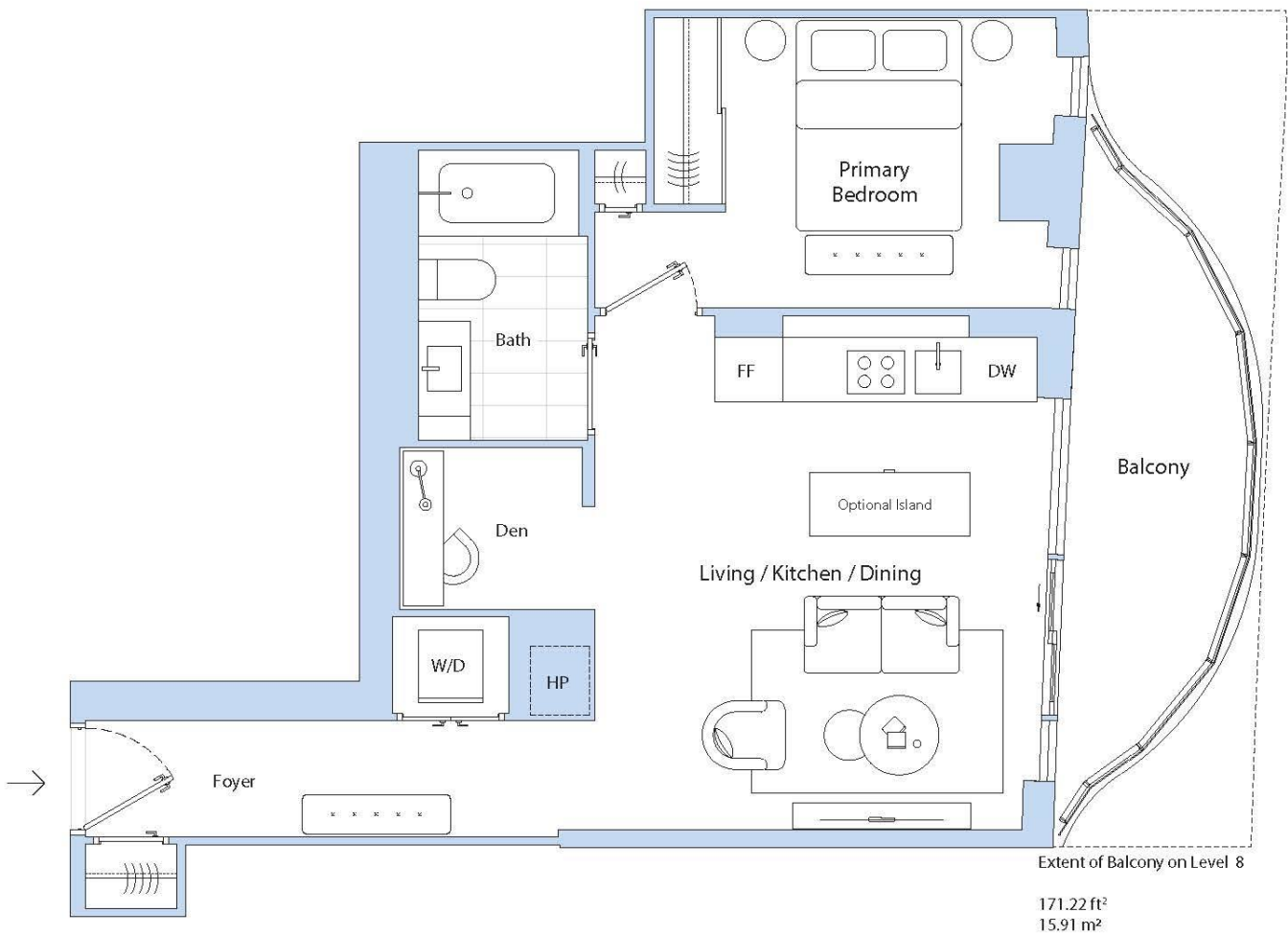
LEVEL 9 - 32



LEVEL 8

T-1D1-B

1 Bedroom, 1 Den, 1 Bathroom, Balcony

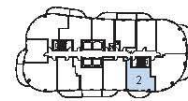


TOTAL	FT ²	M ²
Interior	605 ft ²	56 m ²
Exterior	99 ft ²	9 m ²
Total	704 ft ²	65 m ²

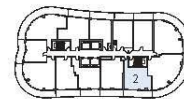
DIMENSIONS	FT	M
Living / Kitchen / Dining	14' 4" x 15' 4"	4.36 m x 4.67 m
Primary Bedroom	10' 10" x 9' 0"	3.29 m x 2.76 m
Den	5' 8" x 5' 0"	1.73 m x 1.54 m

ORIENTATION

NORTH



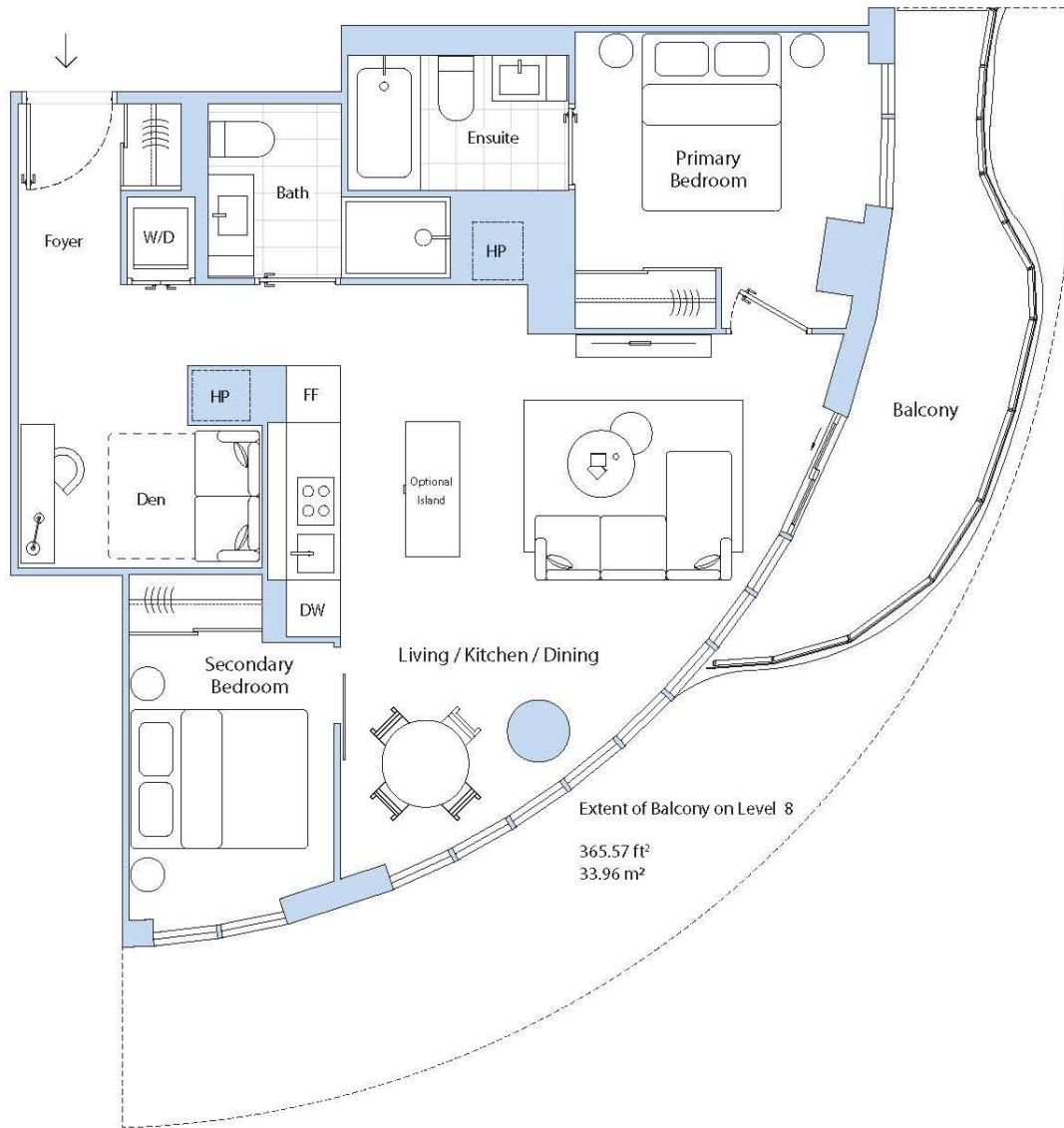
LEVEL 9 - 32



LEVEL 8

T-2D2-A

2 Bedrooms, 1 Den, 2 Bathrooms, Balcony



TOTAL	FT ²	M ²
Interior	863 ft ²	80 m ²
Exterior	132 ft ²	12 m ²
Total	995 ft ²	92 m ²

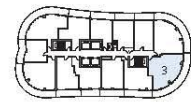
DIMENSIONS	FT	M
Living / Kitchen / Dining	28' 3" x 20' 2"	8.64 m x 6.14 m
Primary Bedroom	11' 4" x 10' 11"	3.46 m x 3.33 m
Secondary Bedroom	7' 7" x 11' 0"	2.31 m x 3.34 m
Den	9' 0" x 7' 6"	2.75 m x 2.28 m

ORIENTATION

NORTH



LEVEL 9 - 32



LEVEL 8

T-2N2-A

2 Bedrooms, 2 Bathrooms, Balcony

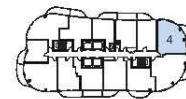


TOTAL	FT ²	M ²
Interior	772 ft ²	72 m ²
Exterior	162 ft ²	15 m ²
Total	934 ft ²	87 m ²

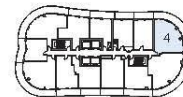
DIMENSIONS	FT	M
Living / Kitchen / Dining	13' 2" x 18' 2"	4.01 m x 5.53 m
Primary Bedroom	10' 0" x 10' 2"	3.05 m x 3.09 m
Secondary Bedroom	7' 10" x 9' 8"	2.39 m x 2.95 m

ORIENTATION

NORTH



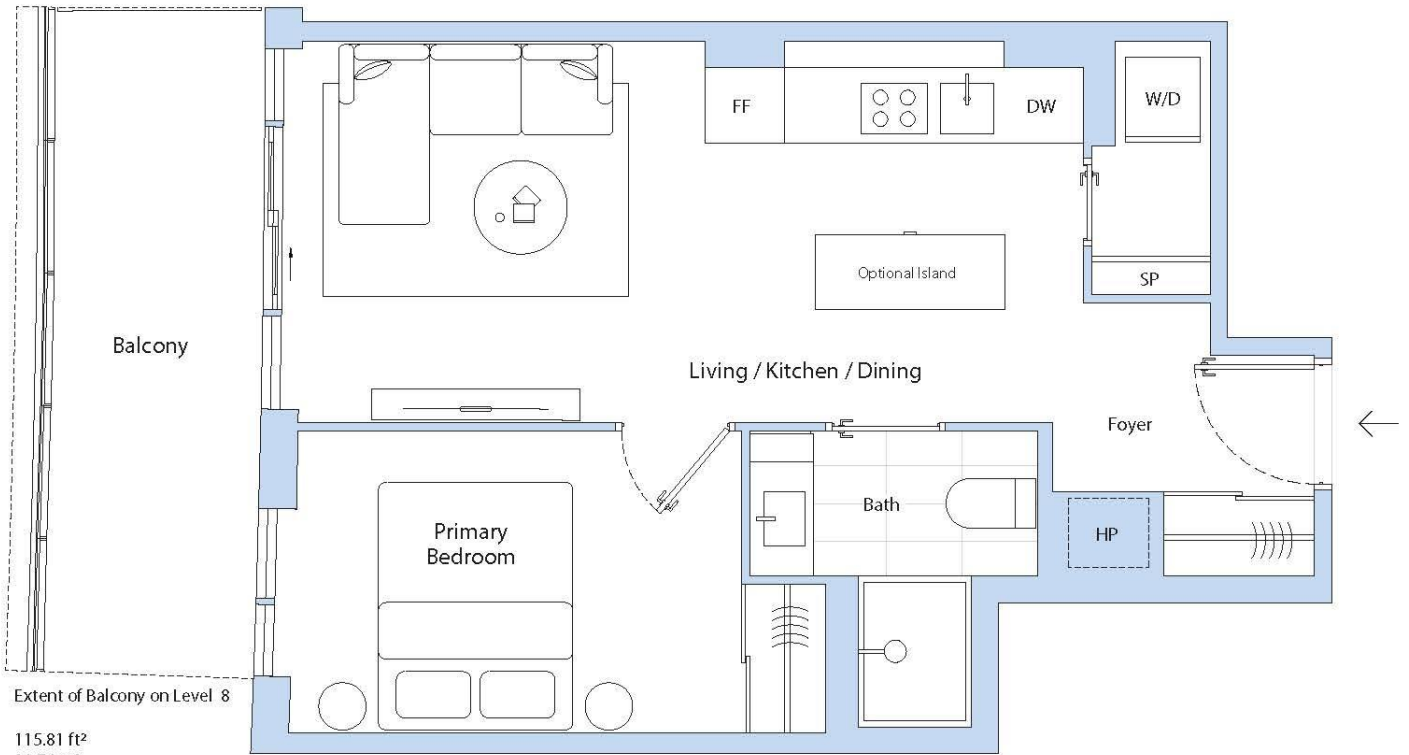
LEVEL 9 - 32



LEVEL 8

T-1N1-A

1 Bedroom, 1 Bathroom, Balcony



Extent of Balcony on Level 8

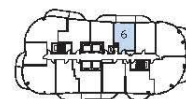
115.81 ft²
10.76 m²

TOTAL	FT ²	M ²
Interior	500 ft ²	46 m ²
Exterior	108 ft ²	10 m ²
Total	608 ft ²	56 m ²

DIMENSIONS	FT	M
Living / Kitchen / Dining	21' 3" x 10' 1"	6.48 m x 3.07 m
Primary Bedroom	12' 4" x 8' 0"	3.75 m x 2.43 m

ORIENTATION

NORTH



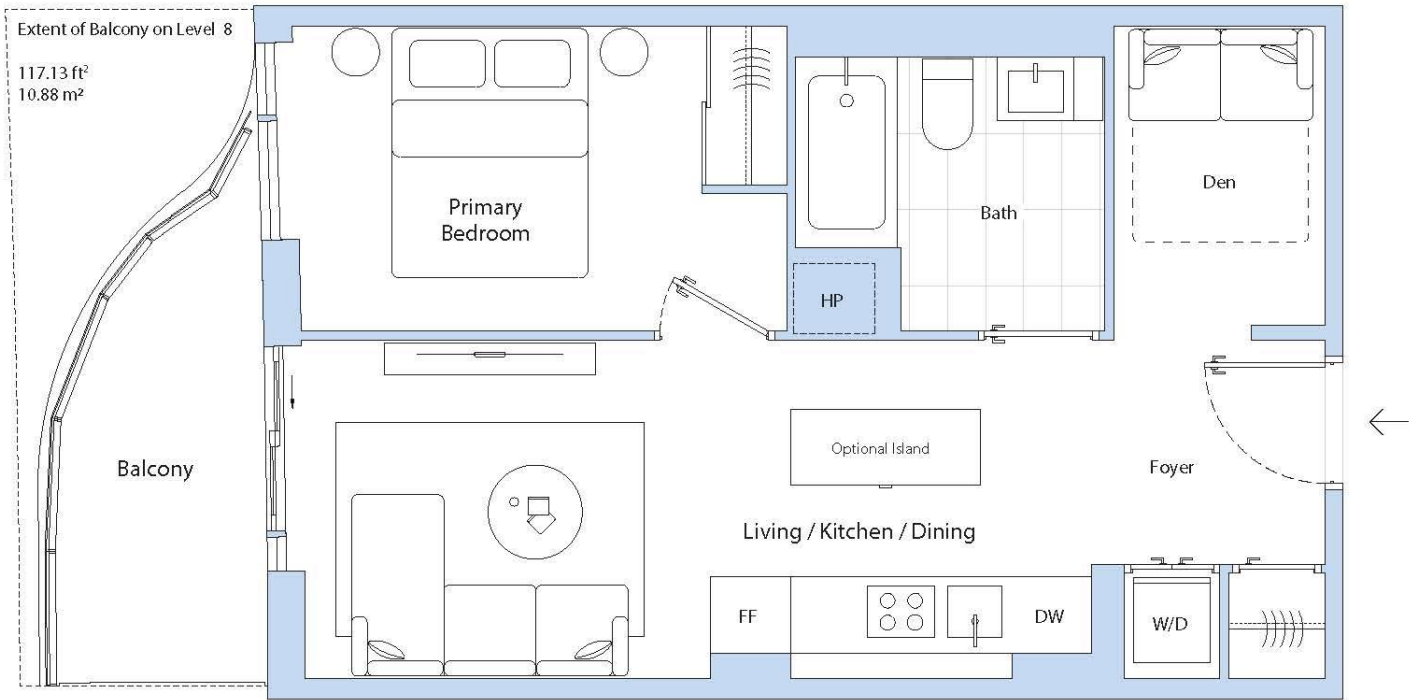
LEVEL 9 - 32



LEVEL 8

T-1D1-C

1 Bedroom, 1 Den, 1 Bathroom, Balcony

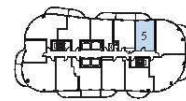


TOTAL	FT ²	M ²
Interior	528 ft ²	49 m ²
Exterior	72 ft ²	7 m ²
Total	600 ft ²	56 m ²

DIMENSIONS	FT	M
Living / Kitchen / Dining	21' 3" x 8' 11"	6.47 m x 2.71 m
Primary Bedroom	12' 9" x 8' 0"	3.89 m x 2.44 m
Den	5' 6" x 7' 11"	1.69 m x 2.41 m

ORIENTATION

NORTH



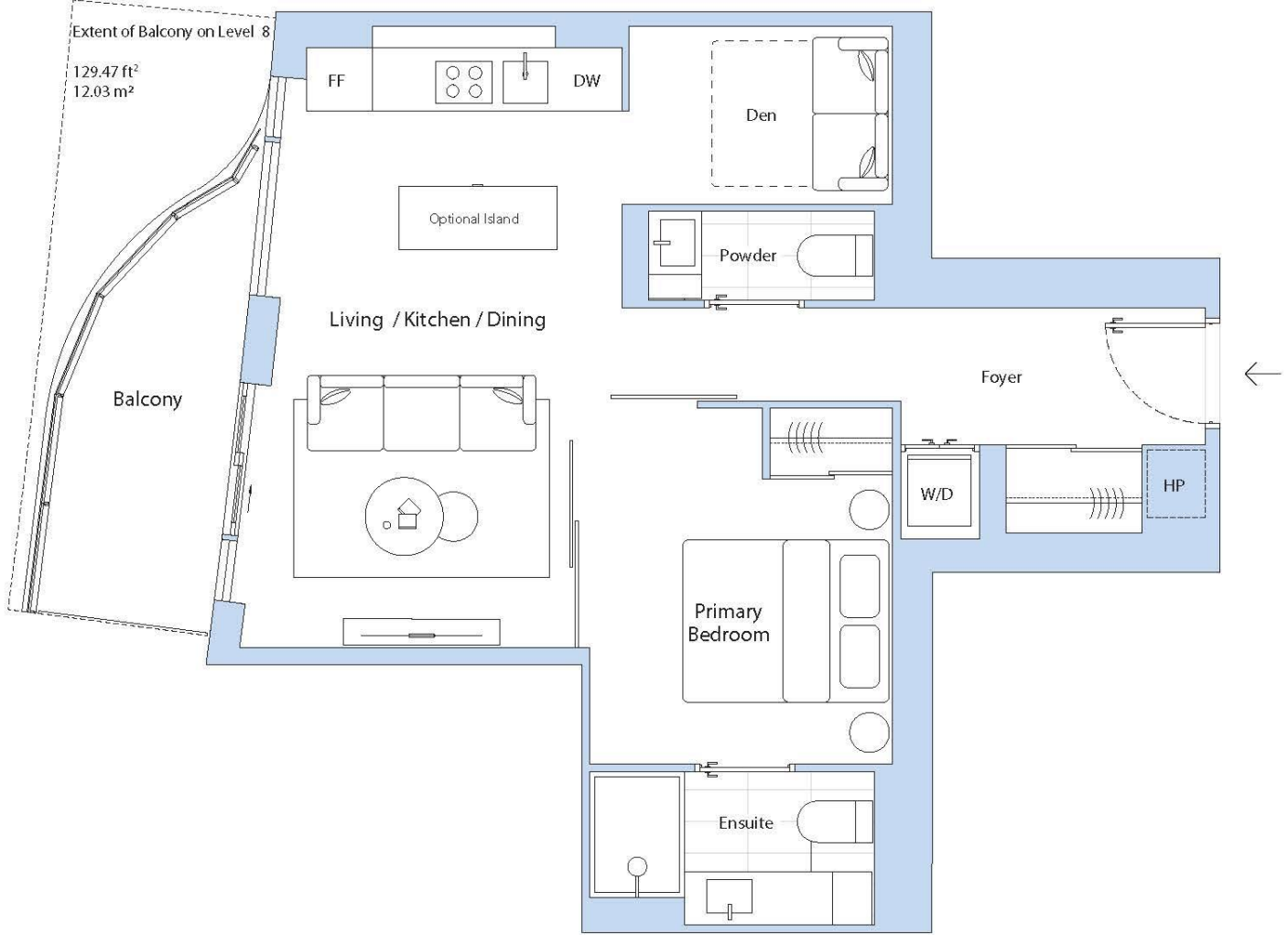
LEVEL 9 - 32



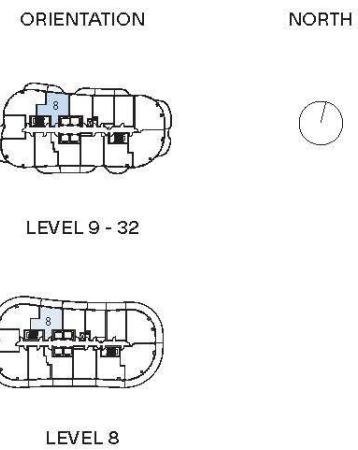
LEVEL 8

T-1D1-D

1 Bedroom, 1 Den, 1.5 Bathrooms, Balcony

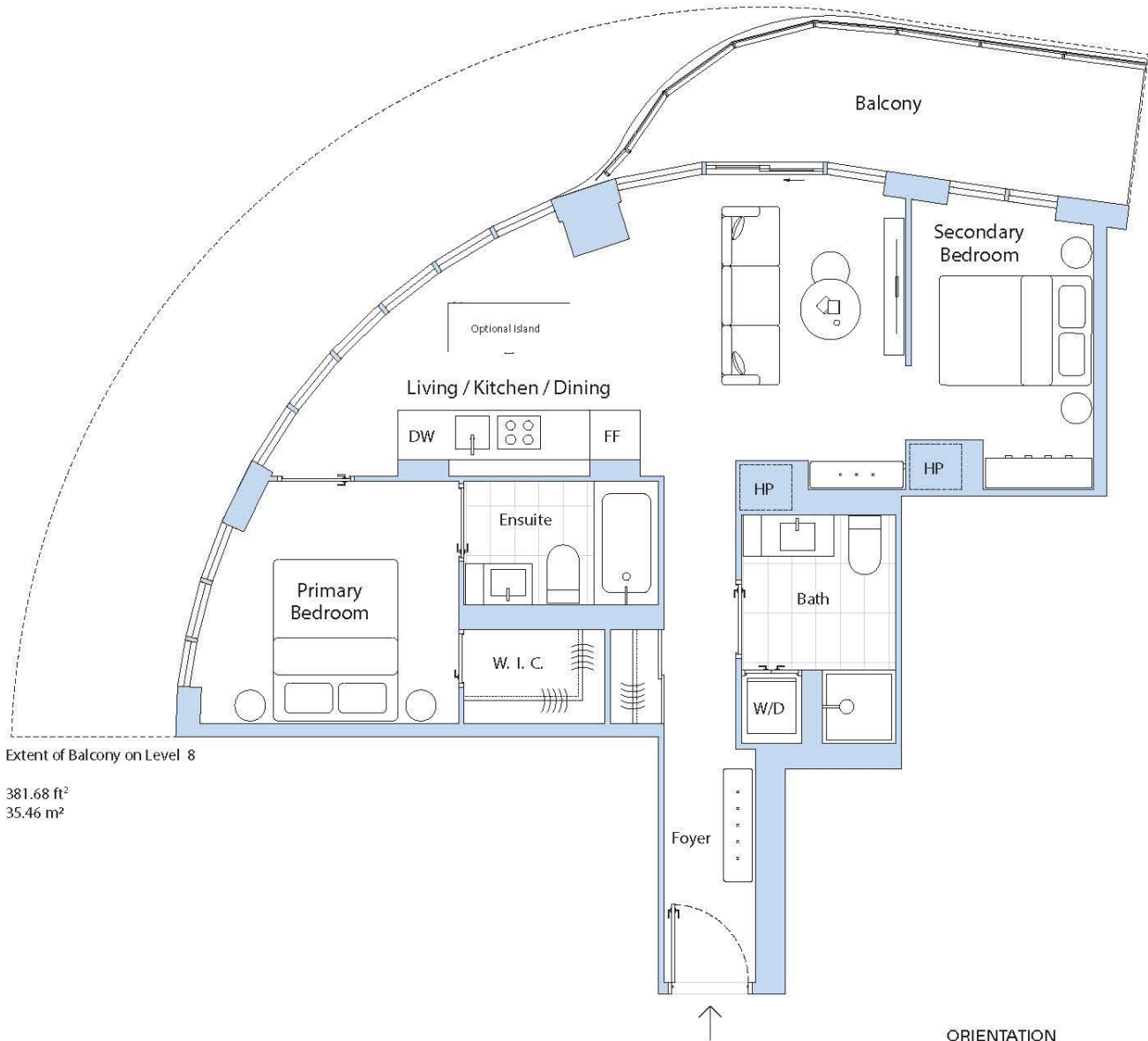


	FT ²	M ²
TOTAL		
Interior	643 ft ²	60 m ²
Exterior	78 ft ²	7 m ²
Total	721 ft²	67 m²
DIMENSIONS		
	FT	M
Living / Kitchen / Dining	11' 4" x 19' 0"	3.45 m x 5.79 m
Primary Bedroom	9' 11" x 11' 3"	3.03 m x 3.43 m
Den	8' 4" x 5' 8"	2.54 m x 1.72 m



T-2N2-B

2 Bedrooms, 2 Bathrooms, Balcony



Extent of Balcony on Level 8

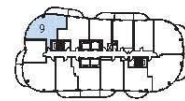
381.68 ft²
35.46 m²

TOTAL	FT ²	M ²
Interior	761 ft ²	71 m ²
Exterior	120 ft ²	11 m ²
Total	881 ft ²	82 m ²

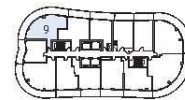
DIMENSIONS	FT	M
Living / Kitchen / Dining	20' 11" x 11' 4"	6.39 m x 3.45 m
Primary Bedroom	11' 1" x 9' 10"	3.38 m x 2.99 m
Secondary Bedroom	7' 7" x 11' 5"	2.30 m x 3.48 m

ORIENTATION

NORTH



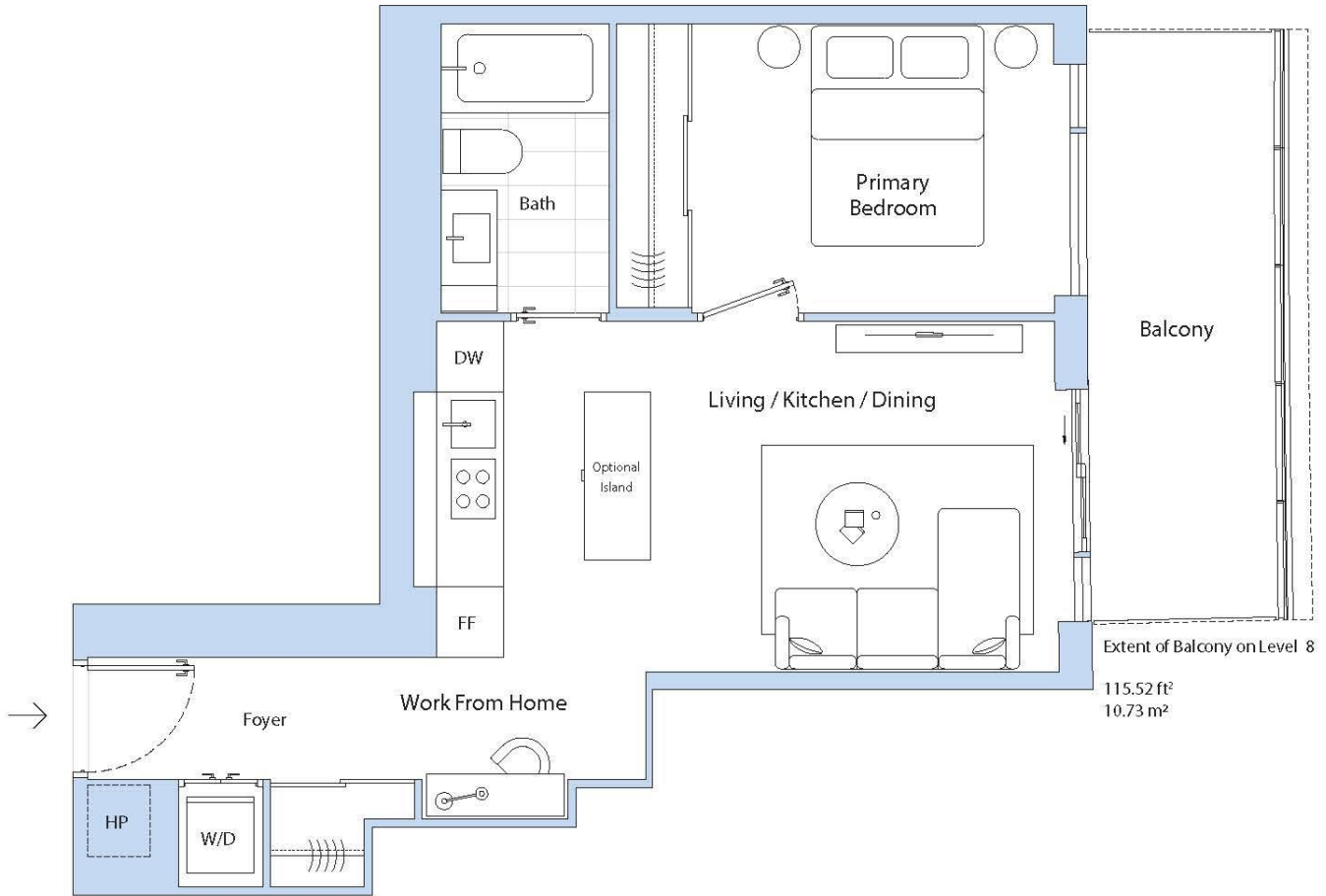
LEVEL 9 - 32



LEVEL 8

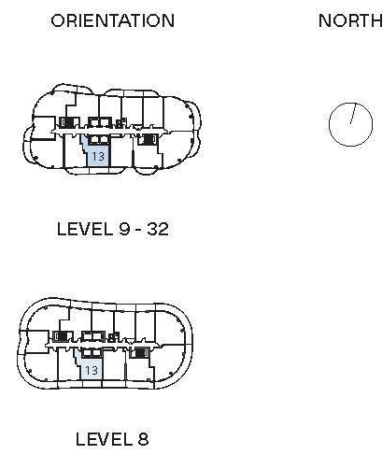
T-1W1-A

1 Bedroom, 1 Bathroom, Balcony



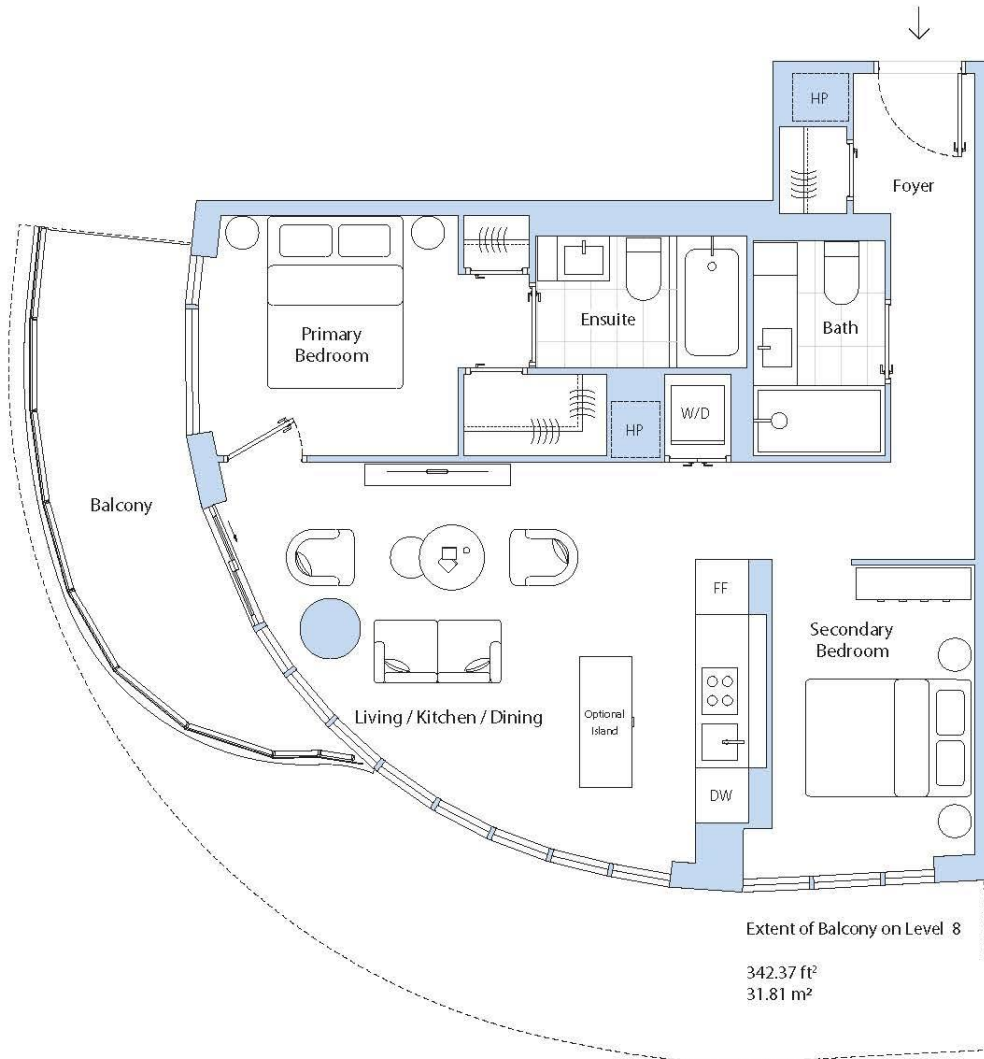
TOTAL	FT ²	M ²
Interior	550 ft ²	51 m ²
Exterior	108 ft ²	10 m ²
Total	658 ft ²	61 m ²

DIMENSIONS	FT	M
Living / Kitchen / Dining	18' 11" x 10' 5"	5.76 m x 3.18 m
Primary Bedroom	11' 3" x 8' 8"	3.43 m x 2.63 m
Work From Home	6' 8" x 4' 10"	2.03 m x 1.47 m



T-2N2-C

2 Bedrooms, 2 Bathrooms, Balcony



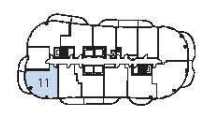
Extent of Balcony on Level 8
 342.37 ft²
 31.81 m²

TOTAL	FT ²	M ²
Interior	768 ft ²	71 m ²
Exterior	126 ft ²	12 m ²
Total	894 ft ²	83 m ²

DIMENSIONS	FT	M
Living / Kitchen / Dining	17' 15" x 15' 8"	5.57 m x 4.78 m
Primary Bedroom	9' 10" x 9' 2"	2.99 m x 2.78 m
Secondary Bedroom	7' 8" x 11' 10"	2.34 m x 3.61 m

ORIENTATION

NORTH



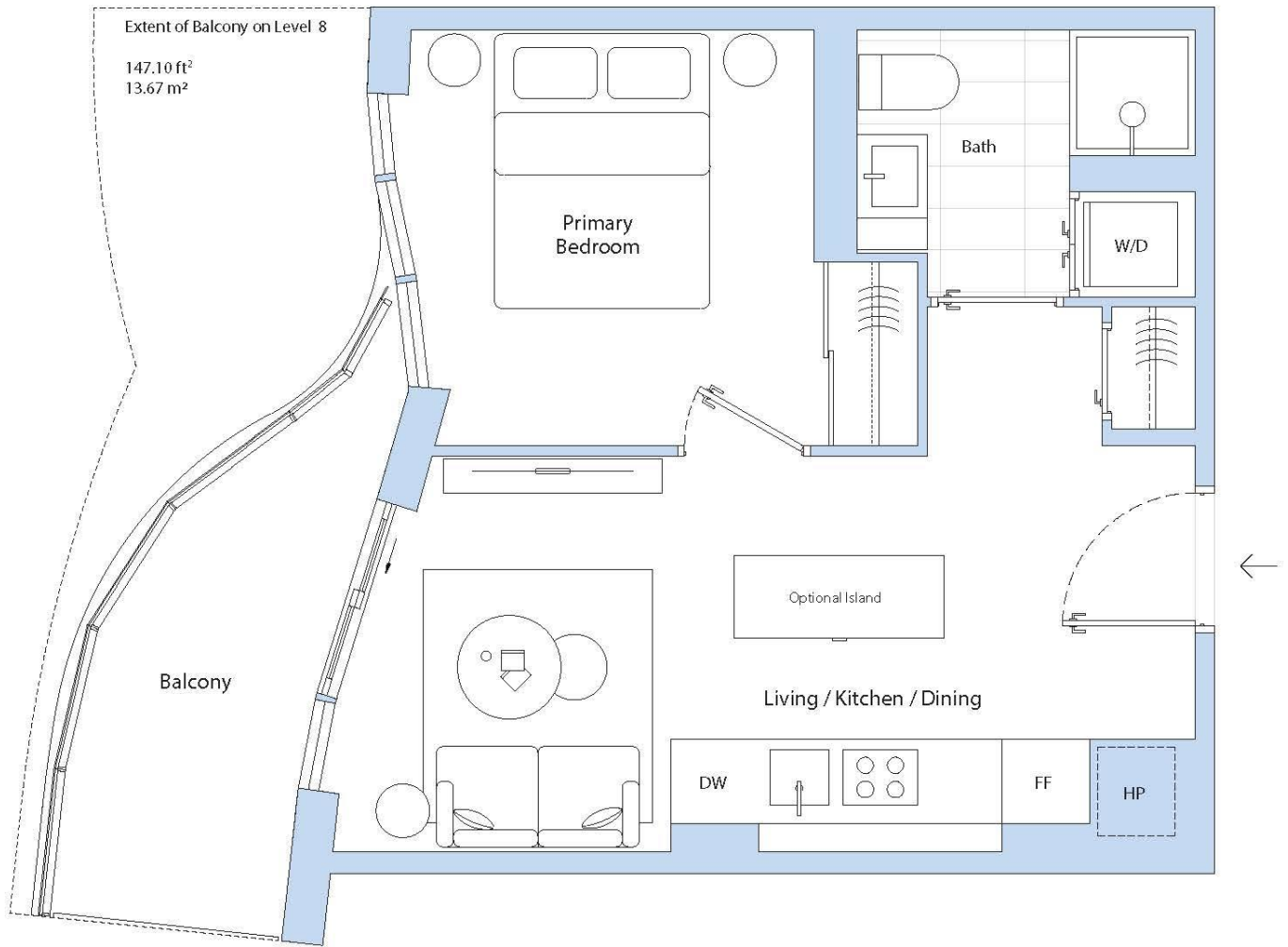
LEVEL 9 - 32



LEVEL 8

T-1N1-C

1 Bedroom, 1 Bathroom, Balcony



			ORIENTATION	NORTH
TOTAL	FT ²	M ²		
Interior	427 ft ²	40 m ²		
Exterior	77 ft ²	7 m ²		
Total	504 ft ²	47 m ²		
DIMENSIONS				
Living / Kitchen / Dining	20' 11" x 9' 5"	6.37 m x 2.87 m		
Primary Bedroom	10' 2" x 9' 11"	3.10 m x 3.02 m		